



In this Issue

- I. Front Page News
- II. Regulatory News
- III. Chapter Resource
- IV. Special Announcements
- V. The Need for Safety
- VI. Chapter Event
- VII. Chapter Information
- VIII. Name that Hazard

2016 Quarter 1 Edition



Honey bee on apricot blossom,
Photo Credit John Crawmer




Front Page News

Message from the SOCO ASSE Chapter President

March 18, 2016

At the Southern Colorado Chapter of the American Society of Safety Engineers our mission is to offer an opportunity for safety professionals to meet other professionals and to share their experiences and knowledge with one another in an effort to promote safe and healthful working conditions in Southern Colorado. As the 2015 – 2016 Chapter President I am committed to our mission along with our great officers. With nearly 100 members covering a broad territory of 22 counties, our challenges are real in, succession planning, engagement, acquiring members, and finding technical acumen applicable to our community which we serve.

These are not uncommon challenges amongst volunteer organizations. After all, did you know that The American Society of Safety Engineers is a member driven organization and that the officers for the Southern Colorado Chapter are all volunteers? If not, you may be intrigued to know that while our chapter is small, compared to our northern neighbors, we still have fun and are able to provide safety training topics, host OSHA Compliance Safety and Health Officers, learn from industry experts, take facility tours, and partake in great networking opportunities. We believe that all of this adds value to the profession and helps sustain the noble calling to protect human life. 

– John Crawmer



II. Regulatory News –Crystalline Silica

“The final standards include several major changes from the proposed standards as a result of OSHA’s analysis of written comments and testimony on the proposed rule. The scope of the standards has been revised to exclude tasks that involve low exposures; the standards do not apply where worker exposures to respirable crystalline silica will remain below 25 $\mu\text{g}/\text{m}^3$ as an 8-hour time-weighted average under any foreseeable conditions (employers in general industry and maritime must have evidence to support this exception)”.

What industries are affected?

Construction
Glass manufacturing
Pottery products
Structural clay products
Concrete products
Foundries
Dental laboratories
Paintings and coatings
Jewelry production
Refractory products
Ready-mix concrete
Cut stone and stone products
Abrasive blasting in maritime, construction, and general industry
Refractory furnace installation and repair
Railroad transportation
Oil and gas operations

Quartz is the most common form of crystalline silica. Cristobalite and tridymite are two other forms of crystalline silica. All three forms may become respirable size particles when workers chip, cut, drill, or grind objects that contain crystalline silica.

Key Provisions

- Reduces the permissible exposure limit (PEL) for respirable crystalline silica to 50 micrograms per cubic meter of air, averaged over an 8-hour shift.
- Requires employers to: use engineering controls (such as water or ventilation) to limit worker exposure to the PEL; provide respirators when engineering controls cannot adequately limit exposure; limit worker access to high exposure areas; develop a written exposure control plan, offer medical exams to highly exposed workers, and train workers on silica risks and how to limit exposures.
- Provides medical exams to monitor highly exposed workers and gives them information about their lung health.
- Provides flexibility to help employers — especially small businesses — protect workers from silica exposure.

Compliance Schedule

Both standards contained in the final rule take effect on June 23, 2016 after which industries have one to five years to comply with most requirements, based on the following schedule:

- *Construction* – June 23, 2017, one year after the effective date.
- *General Industry and Maritime* – June 23, 2018, two years after the effective date.
- *Hydraulic Fracturing* - June 23, 2018, two years after the effective date for all provisions except Engineering Controls, which have a compliance date of June 23, 2021.



III. Chapter Resource

UNDERSTANDING THE EMR AND ITS RELATIONSHIP TO SAFETY

ASSE SOUTHERN COLORADO CHAPTER
MARCH 18, 2016

SONJA J. GUENTHER, ALCM, ARM, CIC, CRM
VICE-PRESIDENT, IMA CORP. /DENVER, CO



<http://southerncolorado.asse.org/wp-content/uploads/2016/03/EMODS-Presentation-Made-Easy.pdf>

At our last SOCO ASSE chapter meeting the knowledgeable Sonja J. Guenther presented on the *Experience Modification Rating and Its Relationship to Safety*. This topic was well-received by those in attendance because it helped to show how the the number is a calculation and can be adjusted using varialbes such as payroll and deductibles which affects your workers' compensation premium. This was an interesting topic for a safety professional who manages a safety program because reducing claim frequency and severity can positively reflect in the EMR calculation and it is also important to understand all variables that affect the final EMR multiplier.





IV. Special Announcement 1



Calling All Associate Safety Professional (ASP) Hopefuls

What:

We are forming an ASP Study Group and our goal is to take the ASP exam in 2016

Where:

To Be Decided, we are searching for a central Colorado Springs location

When:

Wednesday evenings from 5:00PM to 7:00PM

Point of Contact :

Please contact **Beverly Santarelli** at (808) 277-2561 Email: balarranaga@aol.com

We welcome subject matter experts who would be interested in sharing their knowledge on ASP test topics.

ASP Candidates:

- Will have a minimum of a U.S. Bachelor's degree in any field or an Associate's in safety, health, or the environment, or a closely related field
- Will have 1-year of safety experience where safety is at least 50%, preventative, professional level with breadth and depth of safety duties

<http://www.bcsp.org/ASP>



IV. Special Announcement 2



Receive 20% off Your Next Safety Class

Exciting news for those aspiring safety professionals or those who seek further education! SOCO ASSE Chapter has an agreement with the Rocky Mountain Education Center (RMEC), OSHA Training Institute (OTI) <http://www.rmecosha.com/>.

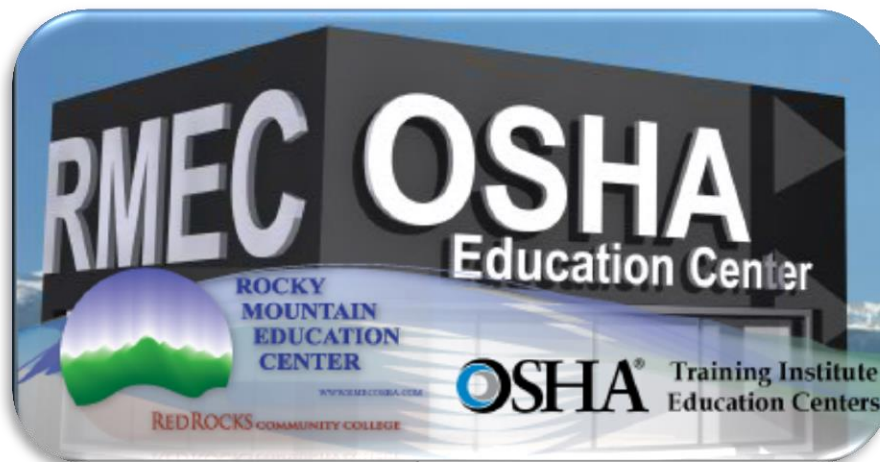
The 20% discount is valid for all Southern Colorado Chapter and Colorado Chapter ASSE members. To receive the discount request an invoice and indicate in the comment field that you are with Southern Colorado Chapter or Colorado Chapter ASSE to receive the 20% off classes.

Jeannette Werner, Program Director

Rocky Mountain Education Center

13300 West Sixth Avenue, Campus Box 41 Lakewood, CO 80228-1255

Phone: 303-914-6590 or 800-933-8394





V. The Need for Safety – The lowly pallet

1910.176(b) “Secure storage. Storage of material shall not create a hazard. Bags, containers, bundles, etc., stored in tiers shall be stacked, blocked, interlocked and limited in height so that they are stable and secure against sliding or collapse.”



Accident: 200532984 - Employee Amputates Finger While Stacking Pallets

“On April 17, 2009, Employee #1 was stacking wooden pallets when the glove of his left hand snagged the pallet. He moved the pallet to free his left hand, which shifted the weight of the pallet. The pallet tipped catching his right hand between the pallet and a steel pole. The force of the pallet and steel pole on his hand amputated his right ring finger. He received medical attention, but was not hospitalized.”

Photo Source: <http://www.public.navy.mil/navsafecen/Documents/Photo/601-650/610.pdf>

Text Source: https://www.osha.gov/pls/imis/accidentsearch.accident_detail?id=200532984



VI. Chapter Event

May 20th, 2016

What? *Active Shooter Awareness* – Chapter Meeting

When? Friday, May 20th, 2016 @ 1:30PM (1330 hrs)

Why? Executive Instructor, Ken Hilte

Where? 1675 Garden of the Gods Rd, Colorado Springs, CO 80907

Register: <http://southerncolorado.asse.org/events/?ee=45>

Ken Hilte is a law enforcement professional with over 30 years of police experience in both traditional and campus policing. Ken is a retired campus police chief from Pikes Peak Community College (PPCC), where he served a four campus college with over 20,000 students. In addition to his law enforcement role, he was involved in behavioral intervention and provided public education in the area of safety through timely warnings, newsletters, and presentations. He served as an adjunct professor in the criminal justice program as well. He was instrumental in winning a US Department of Education grant \$600,000 for the college which was used to make improvements in the area of emergency management. It was the first such grant ever won in Colorado. He is a past member of the Colorado Police Officers Standardized Training (POST) Curriculum Committee where he served as a subject matter expert (SME). Prior to being appointed campus chief, Ken was a member of the El Paso County Sheriff's Office in Colorado Springs, CO, for 25 years before retiring as a Commander. While there, he served in multiple roles, to include patrol, detentions, public information, accreditation, and investigations. Ken considers the arrest and conviction of a cold case, serial killer, who claimed 48 victims, the highlight of his law enforcement career. He was recently invited back to the sheriff's office to serve in a part time role as an Inspector in the Professional Standards Unit where he ensures the agency is meeting both community expectations and industry standards by conducting inspections and investigating allegations of wrongdoing and substandard performance. Ken is also an FBI Leadership Fellow. In that role, he joined the FBI's Leadership Development Institute (LDI) at the FBI Academy in Quantico, VA, and taught leadership and management to senior law enforcement officials throughout the country and world. Ken has been published in the International Association of Chiefs of Police (IACP) "Police Chief," the National Sheriff's Association (NSA) "Sheriff," the American Correctional Association (ACA) "Corrections Today," and other periodicals and textbooks. He is a veteran of the US Air Force and has a Master's degree in Management from Troy University and a Bachelor's degree from Colorado State University – Pueblo.



VII. Chapter Information

Chapter Officers

| | | | |
|--|---|---------------------------------|-----------------------------------|
| President •John Crawmer, CHST, CET | Vice President •Mike Hawkins, CSP | Treasurer •Bill Tuten | Secretary •Ellen Sarvay |
|--|---|---------------------------------|-----------------------------------|

The Southern Colorado Chapter Meets every other month in Colorado Springs and when possible meetings are held at a local business. We share industry best practices, network with professionals, and build business relationships – it’s fun!

The Southern Colorado Chapter (SOCO) of the American Society of Safety Engineers (ASSE) was formed on June 5, 1962 and is one of the older chapters in the ASSE. We are proud of our heritage and legacy; we had two fellow members (George Huber and D.A. Weaver) come from our chapter. The National ASSE president in 2002-2003 year, Mark Hansen, was a member and past president of the Southern Colorado Chapter. The Southern Colorado Chapter is located in Region II of the ASSE society structure.

Changing Your Contact Information: If you have a change of address, e-mail, or telephone number and you want your ASSE friends to find you, please call the Society office of ASSE at 847-699-2929 or e-mail them at customerservice@asse.org.

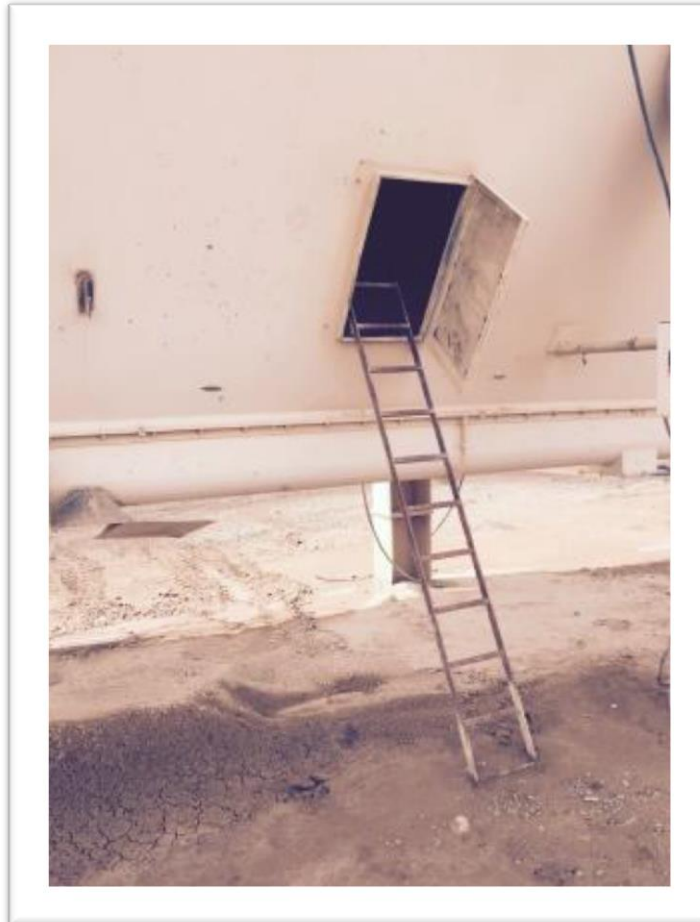
Get Involved with SOCO ASSE Chapter!

- Do you have a business for our members to tour?
- What can we learn from your safety best practices?
- Everyone is invited to share their stories of safety success. Please contact the ASSE SOCO officers to schedule your onsite facility tour, or present your story at the next chapter meeting.

Call now: 719-243-5611



VIII. Name that Hazard



Southern Colorado General Industry hazard observed

Confined spaces are not designed for continuous human occupancy and have limited means of ingress and egress. If a hazard exists in the atmosphere of the confined space, there is an engulfment possibility, unguarded moving equipment, electrical hazards, heat hazards, or water hazards then the space becomes a permit-required confined space.

<https://www.osha.gov/SLTC/confinedspaces/>

Confined Spaces in Construction – The SOCO Chapter recently had OSHA down for a visit and the Compliance Safety and Health Officer provided a detailed presentation about hazards for Confined spaces in construction. The presentation can be found here:

<http://southerncolorado.asse.org/files/> 